

Prefabricated Data Center

FusionModule1000A Prefabricated All-in-One Data Center

Introduction

Huawei FusionModule1000A is an advanced outdoor and prefabricated all-in-one data center facility solution. The solution provides reliable, stable and green environment for IT equipment. The solution can be applied to multiple industries and scenarios and meet data center's requirements on energy saving and fast deployment.

Applicable Industry and Scenario

Enterprise: small data center

Government: data center of smart city and safe city

Education: data center of university and science institute

Energy: on-site data center of mining and exploration

Finance: backup data center

Transportation: power supply for non-IT room of airport/railway station/port

Telecom carrier: small IT room, small IDC, DR equipment room

Features & Value

Simple

- Enclosure, power, cooling, firefighting and DCIM system are prefabricated. All facilities are pre-installed and pre-tested before delivery. It minimizes the engineering work and the on-site installation only takes one day.
- Moveable design make relocation easy and deployment flexibly.

Efficient

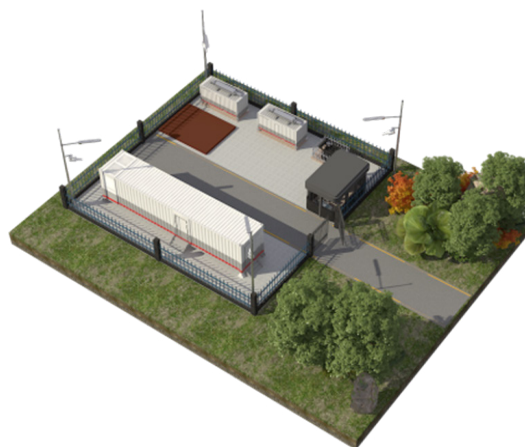
- High-efficiency modular UPS, air-cooled in-row PAC, aisle containment, enclosure of low heat transfer coefficient, industry-leading PUE
- Huawei NetEco system (optional) centralize the management of multiple sites.
- O&M anytime and anywhere with mobile APP

Reliable

- Meet Uptime Tier III requirements
- IP55 protection (IP65 optional) and GR-63-CORE Zone3 anti-seismic
- Durable enclosure, 120min fire-resistance when painted with customized coating, EN 1627~EN 1630 Class 3 anti-theft, multiple access control and video surveillance protect the asset



FusionModule1000A 40ft

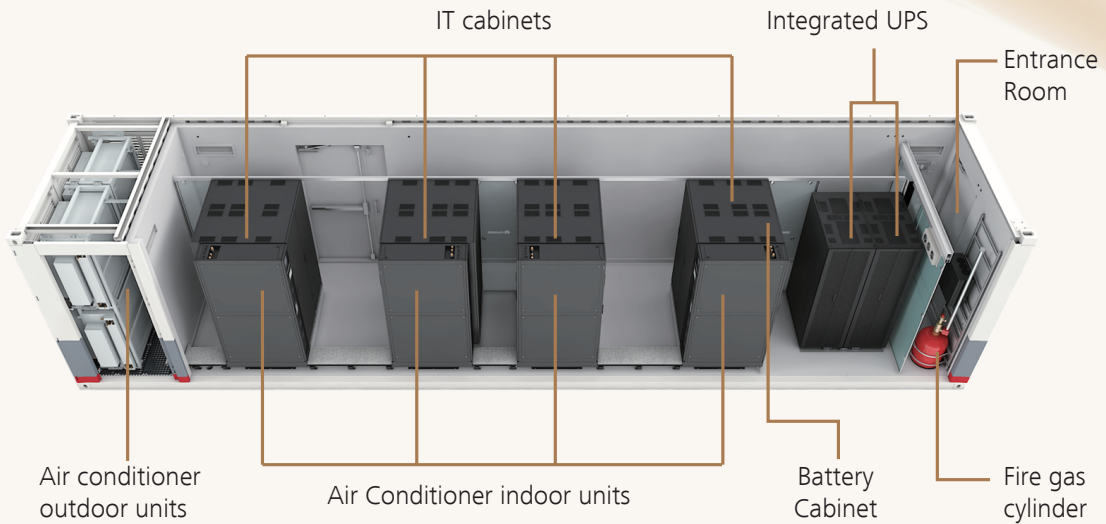


FusionModule1000A Site Scenery

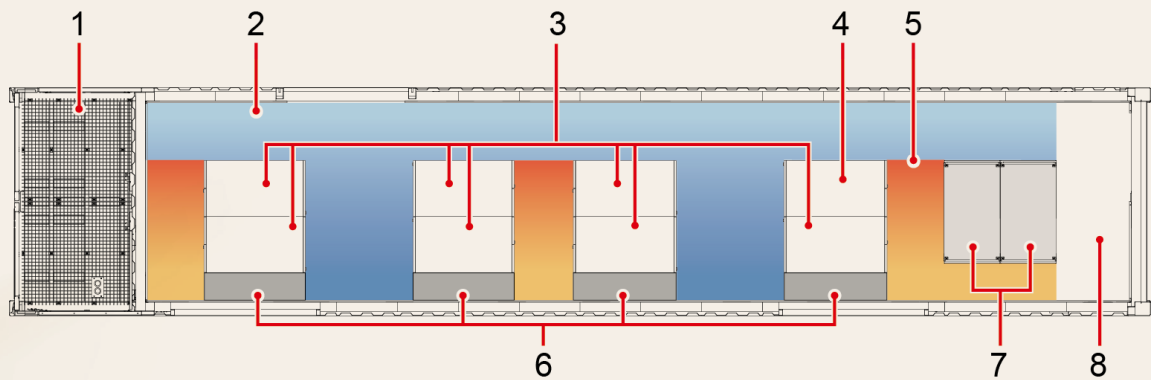
Layout

FusionModule1000A-40ft-IT-2N

Layout

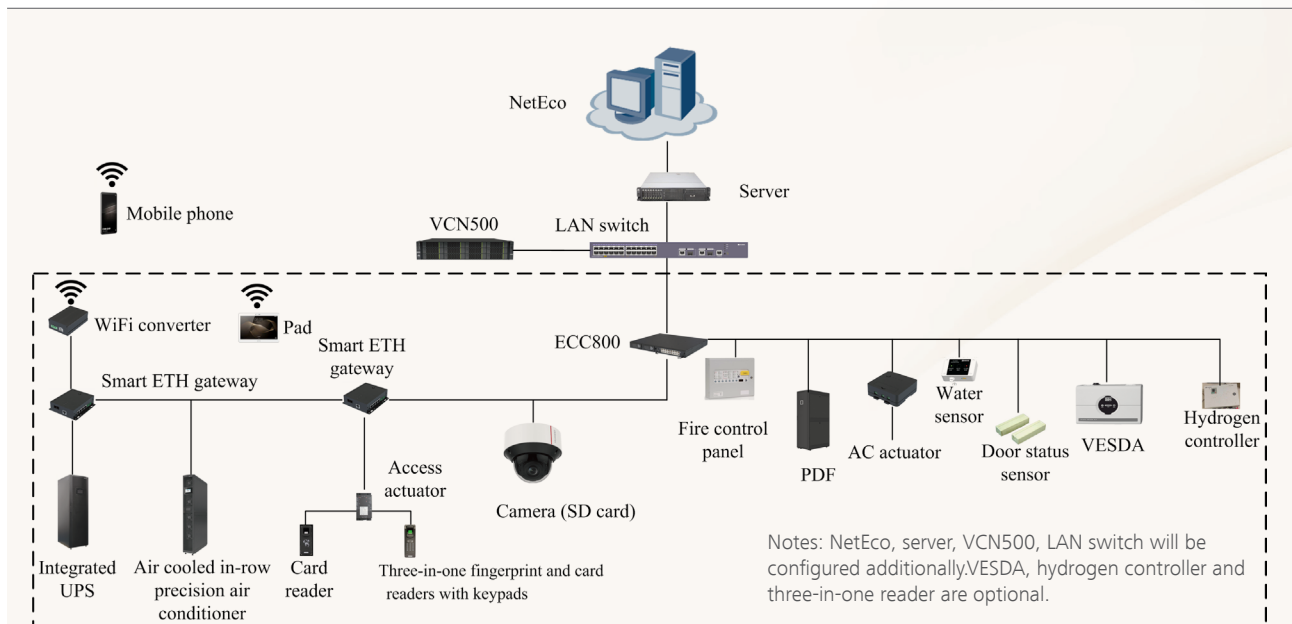


Plan View

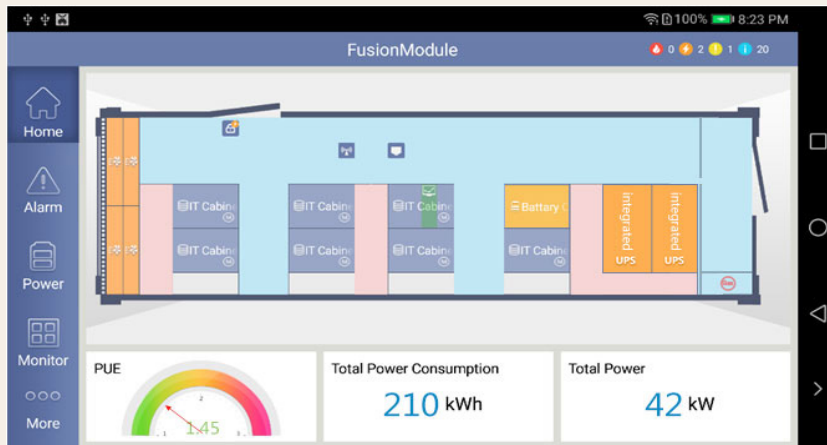


- ① A/C outdoor unit
- ② Cold aisle
- ③ IT cabinet
- ④ Battery cabinet
- ⑤ Hot aisle
- ⑥ A/C indoor units
- ⑦ Integrated UPS
- ⑧ Entrance room

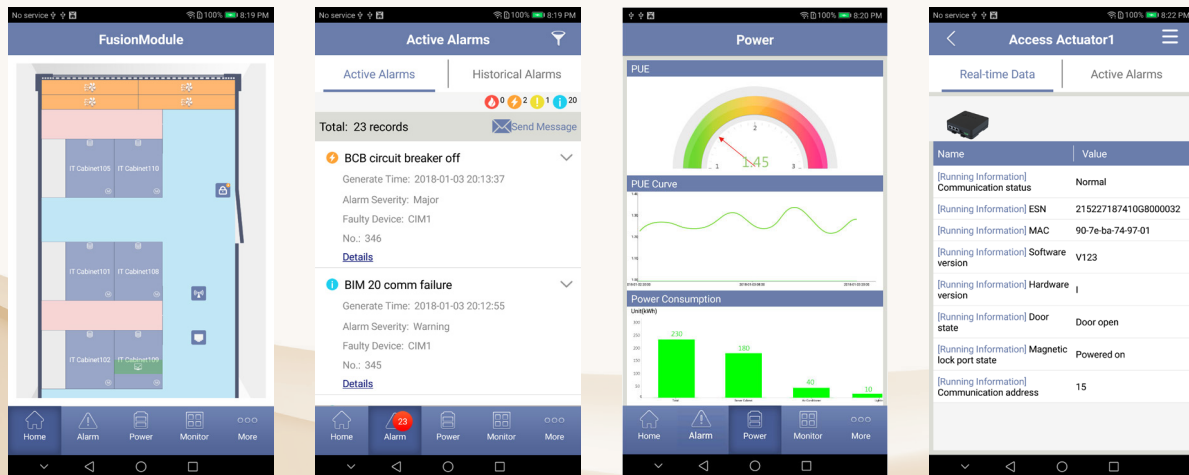
Management System



Display PAD



Mobile Phone APP



Homepage

Real-time Alarm

Power

Monitor

Specifications

System	Sub-item	FusionModule1000A 40ft-IT-2N-208V ^⑦		System	Sub-item	FusionModule1000A 40ft-IT-2N-208V ^⑦
Power	Total IT load	≤ 42kW	≤ 52kW	Fire protection	Auto fire protection system	Automatic fire detection & suppression system c/w emergency release function
	Power density per rack	≤ 6kW	≤ 7.5kW		Alarm	Automatic monitoring and detection, support sound and light alarm
	Input mode	2x400A input, 3Ph+N+PE, 208V /220V /230V AC, 60Hz			Gas	Standard HFC-227ea, optional NOVEC1230
	UPS model	Integrated modular UPS(with integrated MCCB)		Monitoring	Module access	IC card reader as default optional three-in-one access control
	UPS capacity	60kVA			Rack access	Customization ^⑥
	Number of UPS power module	3			Monitoring management	Real-time monitoring of temperature and humidity control, fire control, access control and cooling system
	BAT backup time ^①	10min	5min		In-module display	PAD
	rPDU	Basic type, full-height rPDU A route: IEC320 20 × C13+2 × C19 B route: IEC320 20 × C13+2 × C19			Remote O&M	App
	Surge protection ^②	Level-2, maximum 60kA 8/20us		Enclosure	External size (H × W × D)mm	2896 × 2438 × 12192
Rack	Rack capacity ^③	7 × 42U IT rack			Aisle width	Long aisle of 650-750mm; cold aisle of 1150mm; hot aisle can be extended to 610mm;
	Rack Distribution	7 × 6kW/rack	7 × 7.5kW/rack	Protection	Dustproof and waterproof	IP55 (optional IP65)
	Size (H × W × D) mm	600 × 1100 × 2000 600 × 1200 × 2000	600 × 1100 × 2000 600 × 1200 × 2000		Anti-seismic	GR-63-CORE Zone3
Cooling	A/C type	Air-cooled in-row PAC		Anti-theft	Meet requirements of EN 1627-EN 1630 Class 3	
	Sensible cooling capacity	21kW/unit(3+1 redundancy)		Operating Environment	Operating humidity (RH)	5%~95%
	Coolant	R410A			Operating temp ^④	-20°C~+45°C
	Fan type	EC fan			Altitude ^⑤	≤ 4000m
	Compressor	DC variable-frequency				
	A/C group control	Support				
	Temp. range	18~27°C				
	Humidity range	20%~80%				
	Hot/cold aisle	Hot aisle containment				
Humidification	Electrode humidifier					

① ③: The BAT backup time and rack capacity vary in configuration. Details refer to the Product Overview.
 ②: Surge protection level vary in configuration. Details refer to the Product Overview
 ④: Low-temperature air-conditioner is required for -40°C to -20°C.
 ⑤: Output power derating is required when the altitude is over 1000m.
 ⑥: Customerized access control will cause changes to U space and monitoring solution.
 ⑦ 2N refers to redundancy level of power system.

Copyright © Huawei Technologies Co., Ltd. 2018. All rights reserved.

No part of this document may be reproduced or transmitted in any form or by any means without prior written consent of Huawei Technologies Co., Ltd.

General Disclaimer

The information in this document may contain predictive statements including, without limitation, statements regarding the future financial and operating results, future product portfolio, new technology, etc. There are a number of factors that could cause actual results and developments to differ materially from those expressed or implied in the predictive statements. Therefore, such information is provided for reference purpose only and constitutes neither an offer nor an acceptance. Huawei may change the information at any time without notice.

HUAWEI TECHNOLOGIES CO., LTD.

Huawei Industrial Base
Bantian Longgang
Shenzhen 518129, P.R. China
Tel: +86-755-28780808

www.huawei.com